

# Martin Luther King, Jr. Avenue Survey Results

November 2021



EAST TENNESSEE COMMUNITY  
**DESIGN CENTER**  
1300 N. Broadway, Knoxville, TN 37917

[www.communitydc.org](http://www.communitydc.org)  
865.525.9945





# Welcome!

Thank you for reading the survey results for Martin Luther King, Jr. Avenue. The goal of this survey was to learn how the community wants to improve the MLK corridor from a physical, built perspective. The portion of the MLK corridor stretched from Olive Street to Castle Street and was separated into three distinct sections, which can be seen on the following pages.

The questions to this survey were developed in conjunction with input from local residents and were later distributed by members of the community in the Summer of 2021. There were over 80 responses in total. If you have any questions about the survey, please contact the ETCDC. For contact information see the cover sheet.



The entire corridor is shown above; the dashed blue lines show the edges of the three sections.



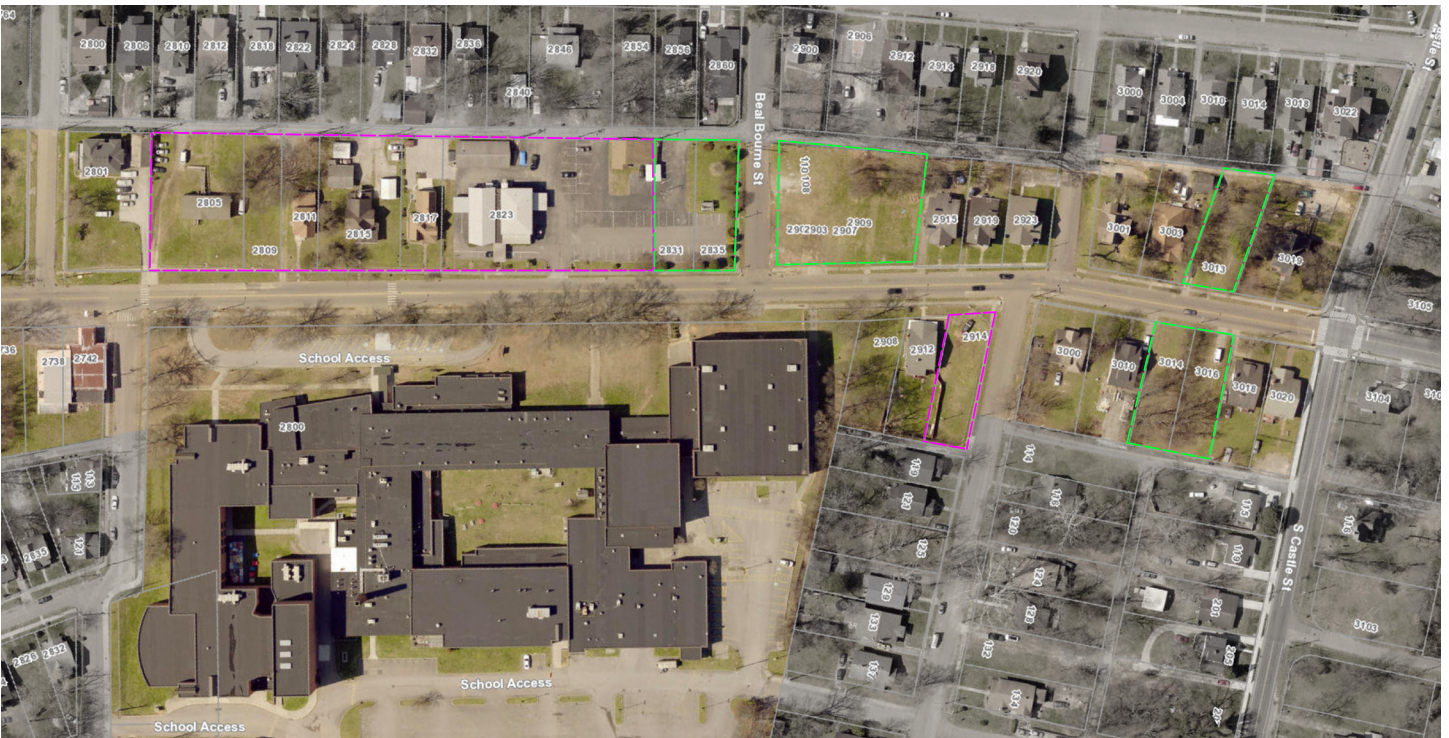
Section 1 of the corridor goes from Five Points, at Olive Street, to Cherry Street. The colored outlines on map represent different zoning types.



## Survey Results: Martin Luther King, Jr. Avenue



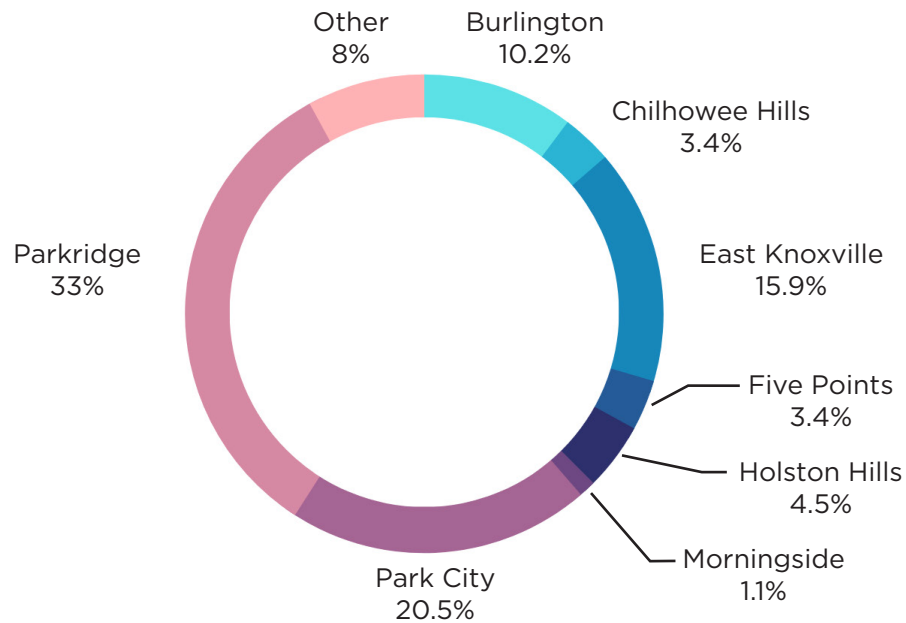
Section 2 of the corridor goes from Cherry Street to South Hembree Street.



Section 3 of the corridor goes from S. Hembree Street, at Austin East High School, to S. Castle Street.

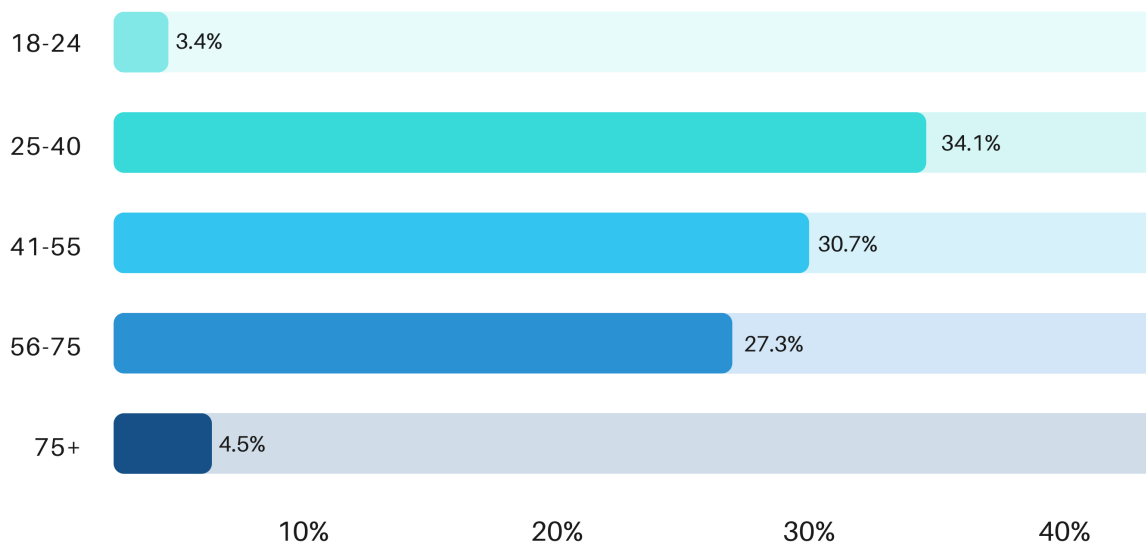
## **Q1**

### **What Neighborhood Are You From?**



## **Q2**

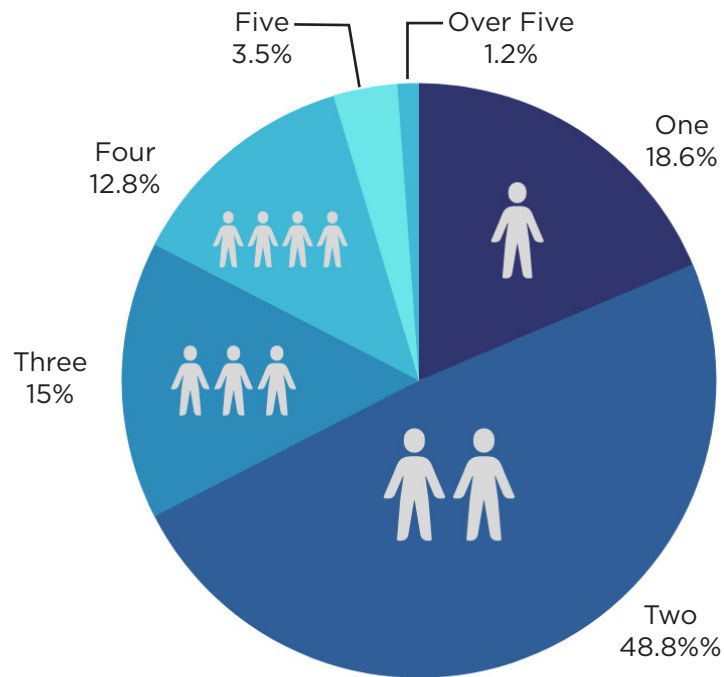
### **What Age Are You?**





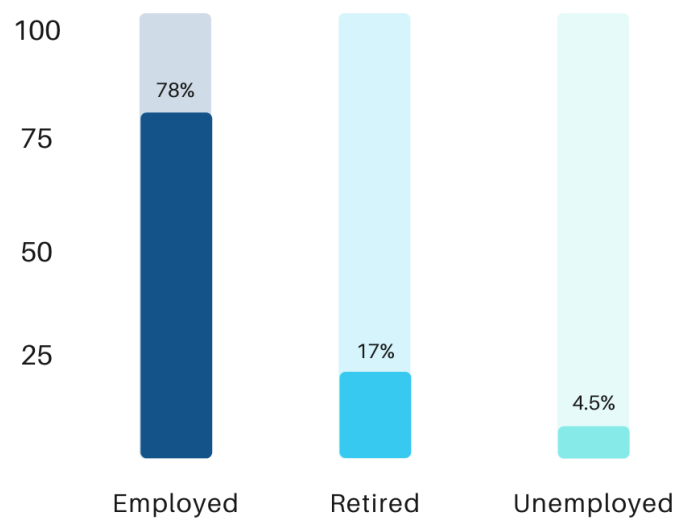
### Q3

#### How Many People Are In Your Household?



### Q4

#### Which Status Best Describes Your Current Situation?

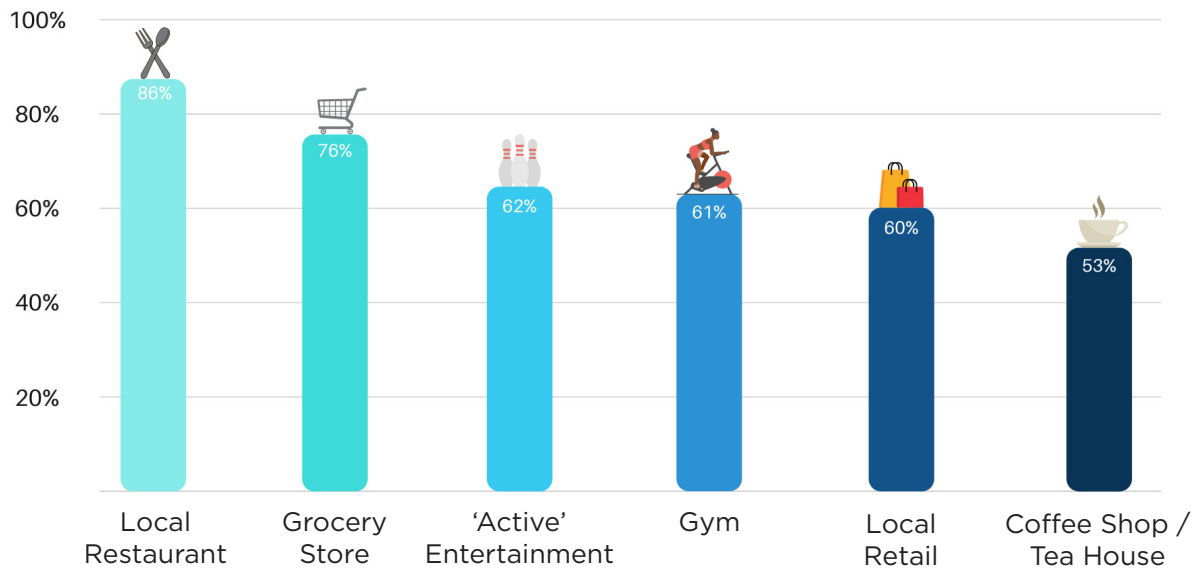




## Q5

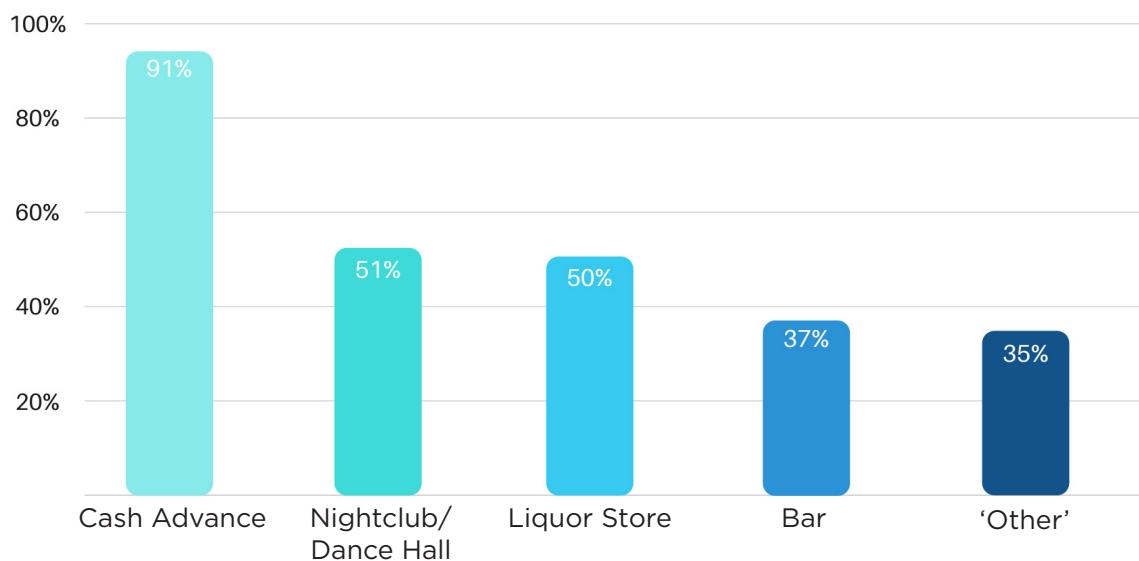
### What Type of Businesses Do You Want Near You?

\*results shown only for businesses that got over 50% of responses\*



## Q6

### What Type of Businesses Do You Not Want To See?



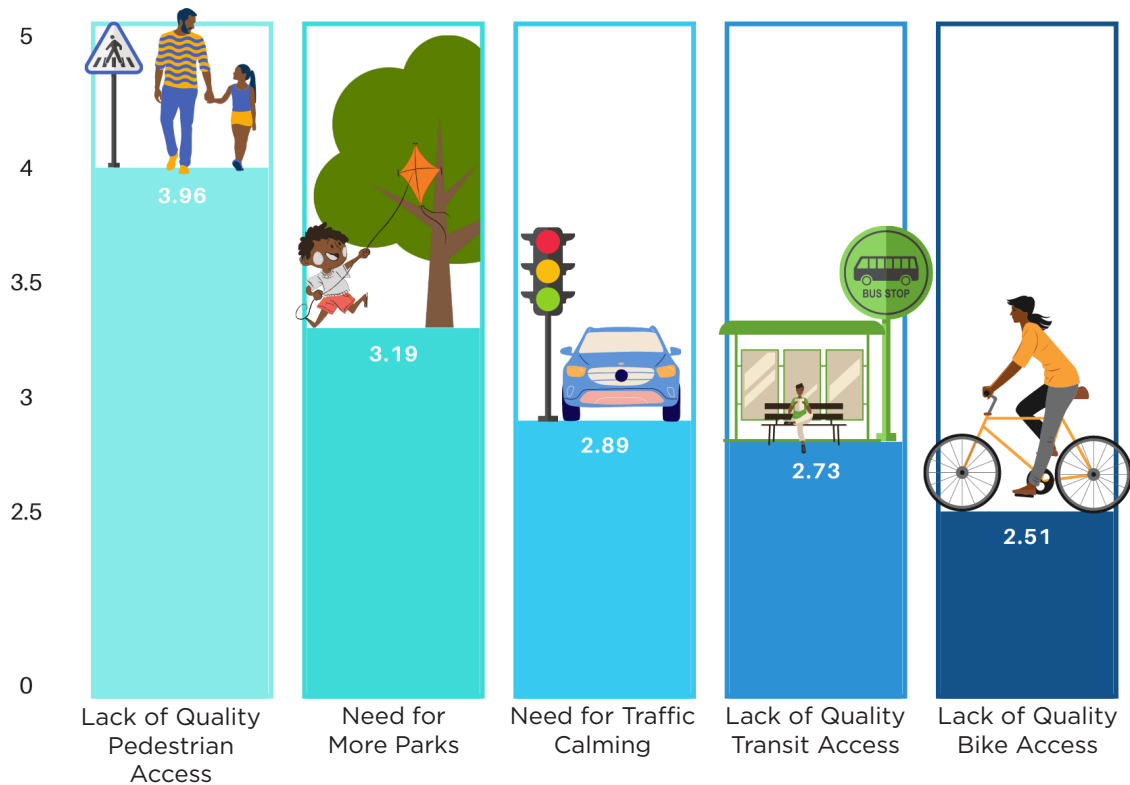
\* 'Other' included responses such as: hourly motels, pawn shops, chain stores, and Dollar Stores \*



## Q7

### Which of These Concerns You The Most Along MLK Jr. Avenue?

Respondents ranked the five options from 1-5 (most to least concern) and the answers were weighted on a scale from 0-5. The numbers shown are the final weighted scores.



## Q8

### (A)What Do You Like About Living Near MLK Jr. Avenue

### (B)What Could Be Done to Improve Your Quality of Life?

#### A.



The thing people said they liked the most about living near MLK Jr. Ave. was the location in relation to downtown. Other key things included the historic homes and the diversity of the area, as well as the sense of community.

#### B.

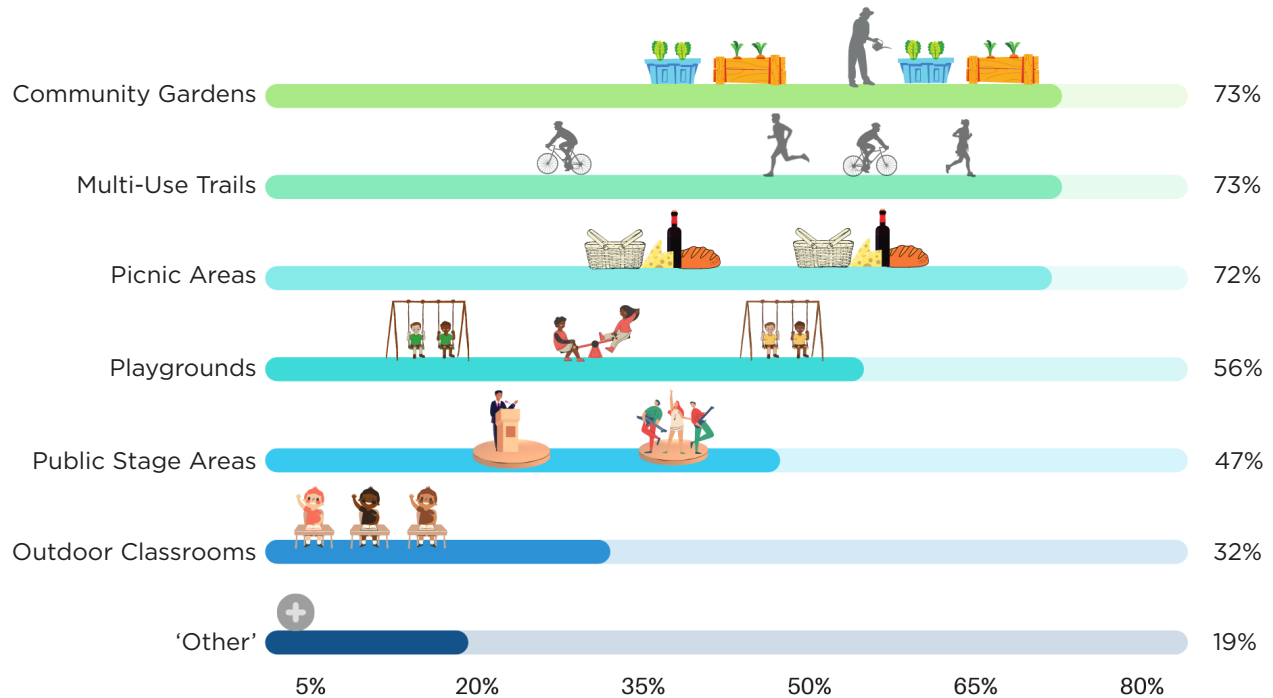


The things people cited most as being able to improve their quality of life along MLK Jr. Ave. was more greenways, parks, and police. Other things included more sidewalks and street lights, businesses (like a grocery store), and improvements to existing facades & buildings.



## Q9

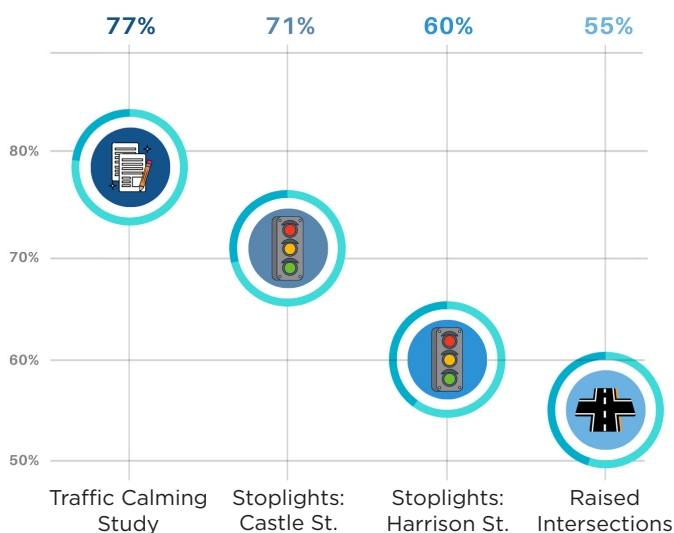
### Which Amenities Would Make You Want to Visit a Park?



\* 'Other' included responses such as: dog parks, shaded seating areas, and tennis courts \*

## Q10

### Which of the Following Traffic Related Actions Do You Support?



Note 1: Details on what a traffic calming study would include were not given, though most studies are inherently similar in their measurements (amount of vehicles, speed, etc)

Note 2: Stoplights would be at the intersection of the two mentioned streets (Castle and Harrison) and MLK Jr. Avenue only.

Note 3: A raised intersection is an intersection in which the road rises to meet the height of the sidewalk; this forces vehicles to slow down (the intersection acts as a speed-hump) and creates a safer crossing for pedestrians, as they don't have to step down onto the road.

**Visual**

**Preference**

**Survey**

Respondents were given four options in various categories from housing types to public art to greenways. They were told to rank those options from 1-4 with 1 being what they liked/wanted the most and 4 being what they liked/wanted the least. The top two responses for each category, and the percentage of votes they received for first place, are shown on the following pages.



## Street Profiles

For this question, respondents were asked to consider the 'street profile', or how the street is physically built from one side to the other. This includes the width of things like sidewalks, whether or not there are bike lanes or on-street parking, and other similar issues.

They ranked four options (including the existing MLK, Jr. Ave) from 1-4 and the answers were weighted on a scale from 0-4 with 4 being the highest possible score. The numbers shown on the next page are the final weighted scores.

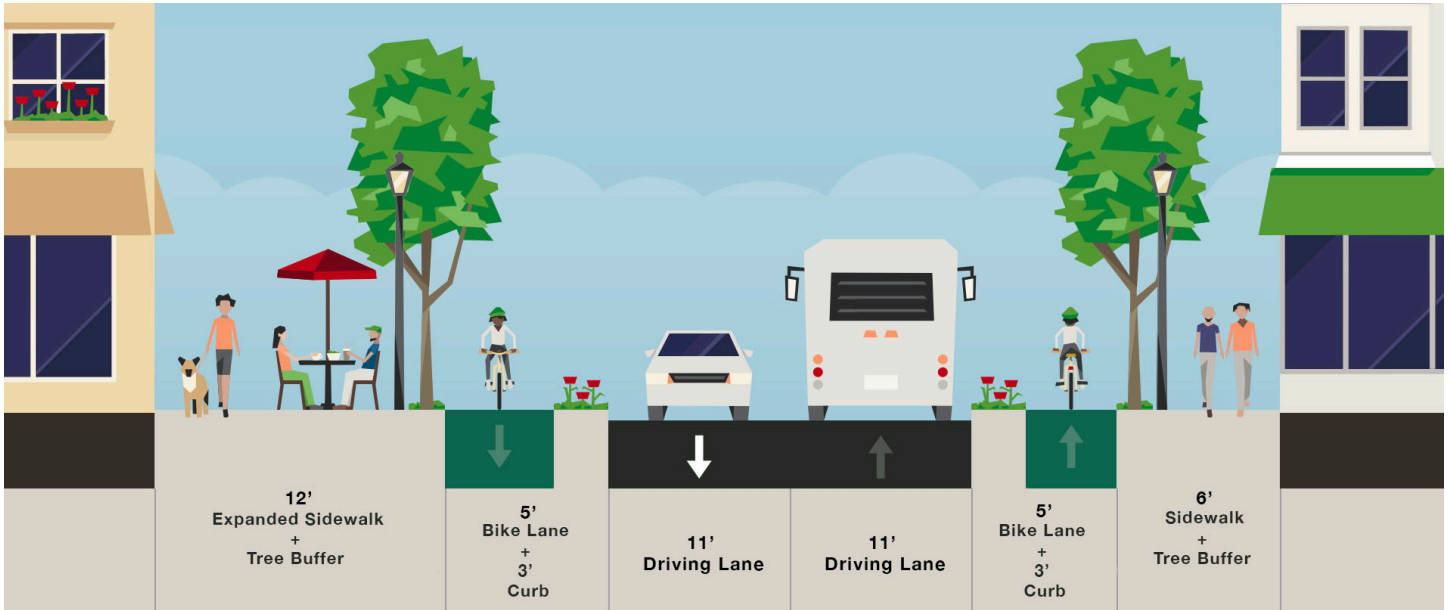
This question only applied to MLK from Olive Street to Cherry Street, which you can see highlighted in the image below.



As well, the existing general street profile of this portion of MLK can be seen below. While there are, for example, some portions where buildings are directly against the sidewalk, this represents the average layout of the street in this area.



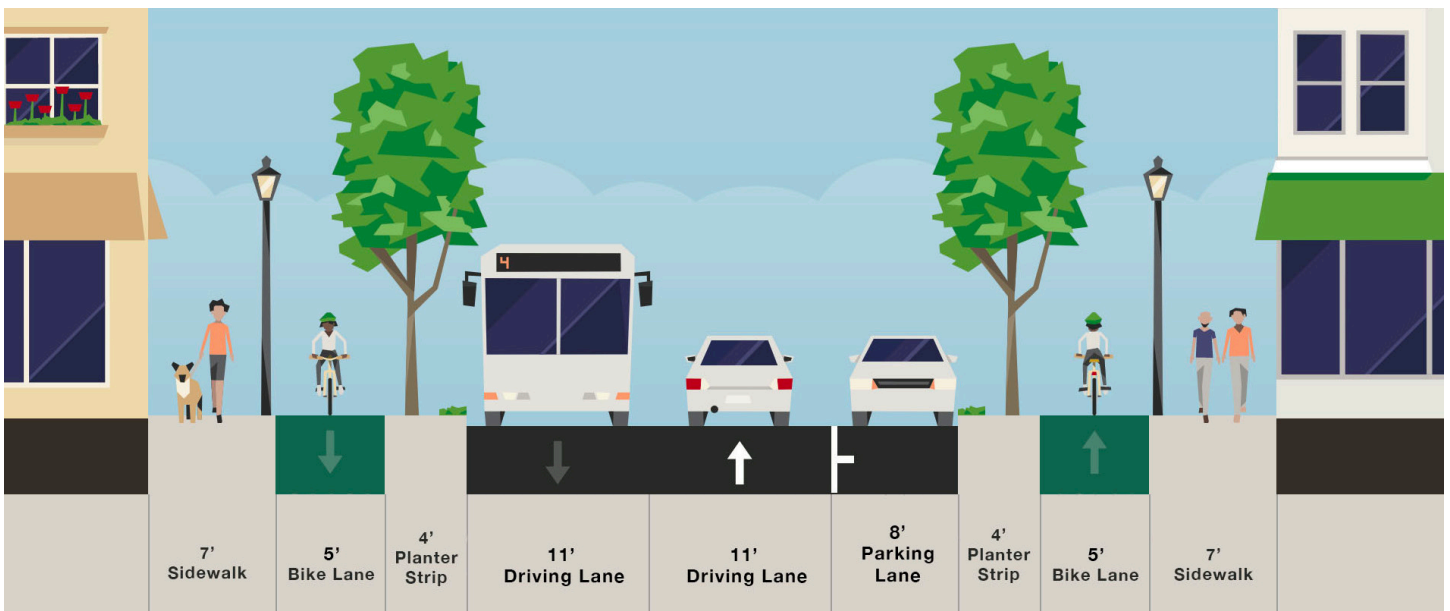
## 1st Place



*Raised bike lanes on both sides of street; one side of street has double-width sidewalk for dining spaces*

**3.2 / 4**

## 2nd Place



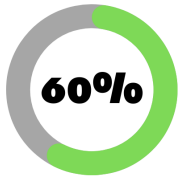
*On-street parking on one side of street; raised bike lanes on both sides*

**2.9 / 4**



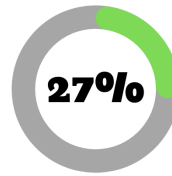
## Housing

**1st Place**



Single-Family Homes

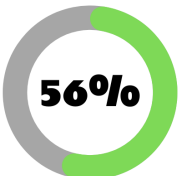
**2nd Place**



Mixed-Use Buildings

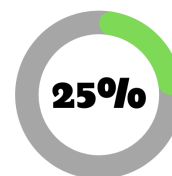
## Parking

**1st Place**



Parking Hidden by Retail

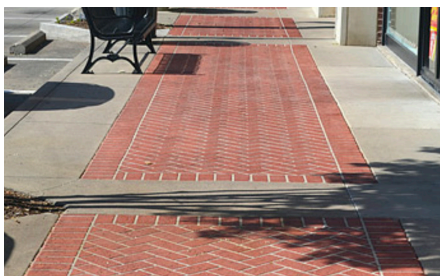
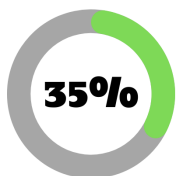
**2nd Place**



Street Parking

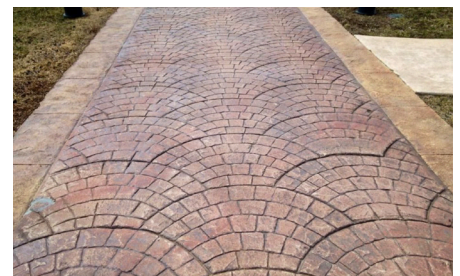
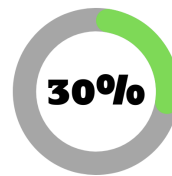
## Sidewalks

**1st Place**



Brick Pavers

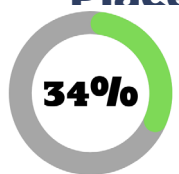
**2nd Place**



Stamped Concrete

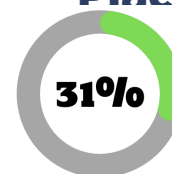
## Crosswalks

**1st Place**



Signaled & Lit

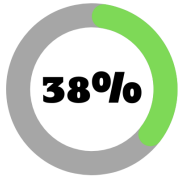
**2nd Place**



Stained or Painted

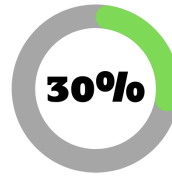
## Bike Lanes

**1st Place**



Concrete-Curb Separated

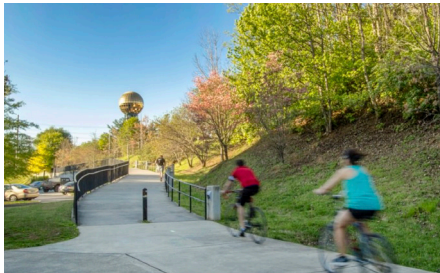
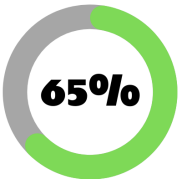
**2nd Place**



Expanded Sidewalk

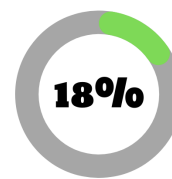
## Greenways

**1st Place**



Through Parks

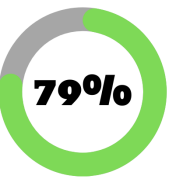
**2nd Place**



Next to Waterways

## Street Trees

**1st Place**



Tall Shade Trees

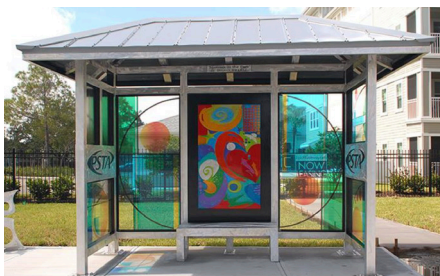
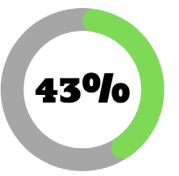
**2nd Place**



Small & Thin

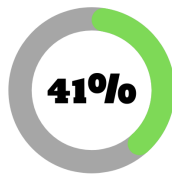
## Bus Shelters

**1st Place**



Shelter with Art

**2nd Place**



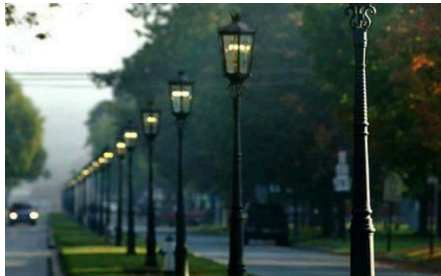
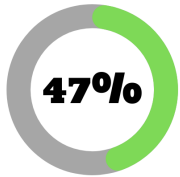
Kiosk-like Shelter



**Survey Results:  
Martin Luther King, Jr.  
Avenue**

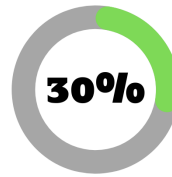
## Street Lighting

**1st Place**



Classic Pedestrian Lights

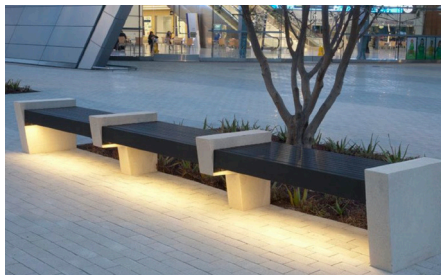
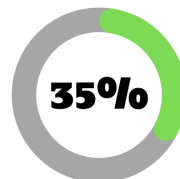
**2nd Place**



Tall with Sidewalk Light

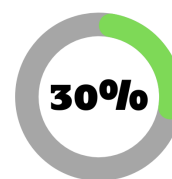
## Street Furniture

**1st Place**



Illuminated Benches

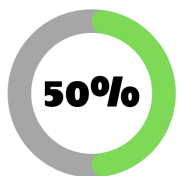
**2nd Place**



Sculptural Benches

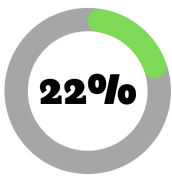
## Public Art

**1st Place**



Wall Murals

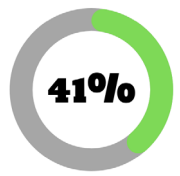
**2nd Place**



Street Murals

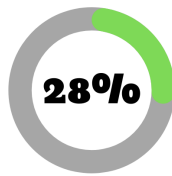
## Branding

**1st  
Place**



Gateway Signs

**2nd  
Place**



Street Banners

**Thank You  
for reading!**



EAST TENNESSEE COMMUNITY  
**DESIGN CENTER**  
1300 N. Broadway, Knoxville, TN 37917

[www.communitydc.org](http://www.communitydc.org)  
865.525.9945

